

Nov, 8, 2004

ABBOTSFORD TRADITIONAL SECONDARY SCHOOL

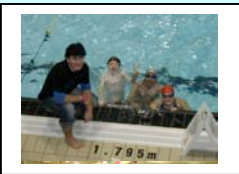
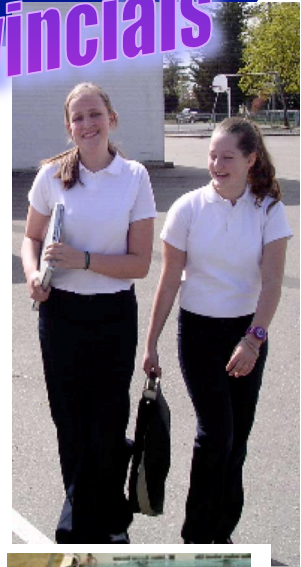
ATSS Swim Team Going To The Provincials

WHAT'S INSIDE?

- IMPORTANT DATES
- ALL STUDENTS NEED INDOOR RUNNERS FOR THE GYM – WE NEED TO PROTECT OUR GREAT GYM FLOOR!
- SCHOOL WEBSITE – LOTS OF GREAT INFORMATION WWW.ATSS.CA
- CHECK OUT OUR DISPLAY AT THE SCHOOL BOARD OFFICE
- LEARNING STYLES

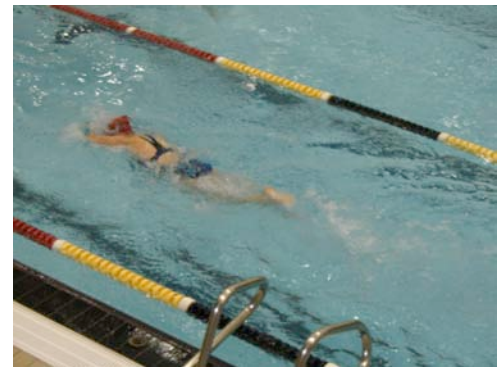
CONGRATULATIONS TO OUR ATSS SWIM TEAMS!!!

This past Thursday our swim team competed and won a place at the B.C. Provincial competition. The team displayed incredible swimming prowess but even more importantly, outstanding spirit and sportsmanship. Well done ATSS swimmers.



LOST AND FOUND

WE HAVE OVER 20 DRESS CODE ITEMS IN OUR LOST AND FOUND BOX IN THE MAIN OFFICE – PLEASE CHECK THE LOST AND FOUND FOR MISSING CLOTHING ON A REGULAR BASIS. ALL CLOTHING NEEDS TO BE CLEARLY NAMED!



IMPORTANT DATES
IN NOV. AND DEC.

- NOV. 10 – LAST DAY OF TERM ONE
- NOV. 10 – REMEMBRANCE DAY CEREMONY – 10:45
- NOV. 11 – REMEMBRANCE DAY - HOLIDAY
- NOV. 12 AND 15 – SCHOOL CLOSURE DAYS
- NOV. 19 – 1:30 PM – OFFICIAL SCHOOL OPENING CEREMONIES - ALL ATSS FAMILIES ARE CORDIALLY
- NOV. 24 – TERM ONE REPORTS SENT HOME
- NOV. 25 – PARENT TEACHER CONFERENCES – 6:00 TO 8:00 PM
- NOV. 26 – PARENT TEACHER CONFERENCES – 8:30 AM TO 12:00 NOON.
- DEC. 17 – LAST DAY OF SCHOOL BEFORE THE WINTER BREAK.

BOYS Tops

- Black or beige golf shirts with crest
- Black hoodies with crest
- Black or beige sweat shirts with crest
- Black vest with crest
- Black, beige or red dress shirt with crest

GIRLS Tops

- Black or beige golf shirts with crest
- Black or beige or red dress T-shirt with crest
- Black hoodies with crest
- Black or beige sweatshirts with crest
- Black vest with crest

Shirts and Slacks

- Black or beige slacks – full length
- Black or beige slacks – Capri length
- Black or beige walking shorts
- Black or beige A-line skirt

SPORTS – PE STRIP

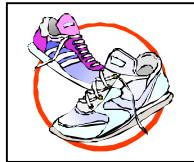
- White T-shirt with ATSS sports logo
- Black gym shorts with red stripe and ATSS sports logo

Lower parking lot = pick up and drop off

East driveway = **entrance**

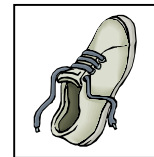
West driveway = **exit**

These are Great



DID YOU KNOW?

DID YOU KNOW THAT OUR GYM FLOOR COST \$200,000?
 DID YOU KNOW THAT SHOES THAT ARE WORN OUTSIDE WILL TEAR AND MARK OUR FLOOR?
 OUR GYM FLOOR IS BEAUTIFUL – WE WOULD LIKE IT TO STAY THAT WAY. ALL STUDENTS SHOULD HAVE A PAIR OF RUNNING SHOES JUST FOR PE – THESE SHOES MUST NEVER BE WORN OUTSIDE! PLEASE HELP TO KEEP OUR FLOOR LIKE NEW – BRING PE RUNNERS!



NOT THESE

Our Front Entrance is Ready

Our front entrance is ready – the paving was completed on Friday. Parents are asked to use the front entrance as the IN DOOR. Please do NOT use the turn-around at the front door – it becomes congested very quickly. Please drive to your left down the driveway to the lower parking lots where there is lots of room to stop and drop-off or pick-up students. The roadway that runs along the back of the school (the one we are currently using) will now be the EXIT DOOR. Signage will be put up shortly.

Parents are reminded not to drop-off or pick-up students **at the side of the school** (the doors by the counselling office). This will ensure that the current entrance and exit driveway is kept clear for people leaving the school.

In Door Out Door





Board of School Trustees
 SCHOOL DISTRICT NO. 34 (ABBOTSFORD)

2790 Tims Street, Abbotsford, B.C. V2T 4M7
 Telephone: (604) 859-4891 Facsimile: (604) 852-8587

Joanne D. Field, Chair
 John G. Smith, Vice-Chair

Dear ATSS Families

The board of School Trustees
 School District No. 34 (Abbotsford)

cordially invites you to attend the official opening
 of the first traditional secondary school in the Abbotsford School
 District.



Abbotsford Traditional Secondary School
 36232 Lower Summas Mountain Road
 Abbotsford, BC

Friday, November 19, 2004 @ 1:30 p.m.
 Tours at 1:00 p.m.

Refreshments to follow

An R.S.V.P. is requested by November 10, 2004 to the school office at
 604-850-7029, or by email (joanne_mcmillian@sd34.bc.ca) if you wish
 to attend.

Joanne D. Field, Chair
 Board of School Trustees

ATSS
 36232 LOWER
 SUMAS
 MOUNTAIN RD.
 ABBOTSFORD,
 B.C.
V3G 2J3

PHONE
 NUMBER: **604-
 850-7029**

FAX NUMBER:
604-850-7028

SCHOOL
 WEBSITE:
WWW.ATSS.CA

[ATSS
 Committees](#)

Library
 Committee

Phoning
 Committee

Donation and
 Grants
 Committee

Awards and
 Prizes
 Committee

Graduation
 Committee

Dress-Code
 Committee

Teacher
 Appreciation
 Committee

Special Events
 Committee

Transportation
 Committee

Safety
 Committee

Yearbook
 Committee

Can you help
 with any of these
 committees?

Please contact
 the office if you
 can share a few
 hours.

Have you visited our school website at...
www.atss.ca

Committees that need members...Fund Raising
 Committee, Donations and Grants Committee,
 PAC Constitution Committee, and PAC
 Newsletter Committee. Please contact the office
 if you can help with these committees.

Remembrance Day Ceremony - Nov. 10th Organized by Cabinet Members

Learning Styles

Many people recognize that each person prefers different learning styles and techniques. Learning styles group common ways that people learn. Everyone has a mix of learning styles. Some people may find that they have a dominant style of learning. Others may find that they use different styles in different circumstances. There is not right mix. Nor are your styles fixed. You can develop ability in less dominant styles, as well as further develop styles that you are already use well.

Using multiple learning styles and “multiple intelligences” for learning is a relatively new approach. This approach is one that educators have only recently started to recognize. Traditional schooling used mainly linguistic and logical teaching methods. It also uses a limited range of learning and teaching techniques. By recognizing different learning styles, teachers can support student learning.

When students recognize and understand their own learning styles, you can use techniques better suited to their own style of learning. This improves the speed and the quality of learning.

The learning styles are:

- **Visual** – you prefer using pictures, images, and spatial understanding.
- **Aural** – you prefer using sound and music
- **Verbal** – you prefer using words, both in speech and writing
- **Physical** – you prefer using your body, hands and sense of touch
- **Logical** – you prefer using logic, reasoning and systems
- **Social** – you prefer to learn in groups or with other people
- **Solitary** – you prefer to work alone and use self-study.

Take the time to find out what your learning style is and how you can use it to enhance your learning. Work to improve the areas that are not your particular areas of strength.

**New
Timetable in
Term Two –
Begins
Nov 16**

We will be revising the timetable slightly after the break (Nov. 11 to Nov. 15) so as to use our time more effectively.

In the new schedule, homeroom will be shortened by 10 minutes to 5 minutes every morning, and START will be extended by 10 minutes.

The new times are:

HR 8:15-8:20
Per 1 8:20-9:20
Break 9:20-9:30
Per 2 9:30-10:30
Per 3 10:30-11:30
Lunch 11:30-12:10
START 12:10 – 12:40
Per 4 12:40-1:40
Per 5 1:40-2:40

Please Support The Dress Code

LIBRARY HELPERS NEEDED

WE HAVE OVER 1000 LIBRARY BOOKS WAITING TO GO ON THE SHELVES. WE WILL HAVE A LIBRARY TECH TO CODE THE BOOKS, BUT WE NEED HELP TAPING AND PUTTING ON SPINE LABELS – DO YOU HAVE SOME TIME TO SHARE - CAN YOU HELP?

PLEASE CONTACT THE OFFICE AT 604-850-7029 IF YOU CAN VOLUNTEER SOME TIME.